

V4 SMALL BALER

SPECIFICATIONS

- ✓ Bale size: 700mm H (Variable) x 650mm W x 400mm D
- ✓ Bale Weight: 30-70kg
- ✓ Power: Single phase 220V 50Hz
- ✓ Cycle time: 28 seconds
- ✓ Compaction force: Up to 5 tonnes
- ✓ Machine Weight: 300kg
- ✓ Noise Level: 70dB
- ✓ Dimensions: 2017mm H x 765mm W x 573mm D
- ✓ e-Power
- ✓ EN 16500 Compliant
- ✓ IP54 Standards

Recommended for IGA's, convenience stores, service stations, hotels, restaurants, retail and manufactures and distributors



High compaction ration and large fill chamber



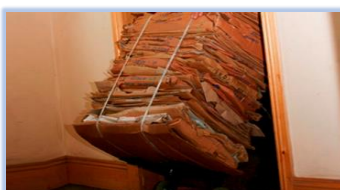
Low-voltage user controls for added safety



28-second cycle time



Integrated bale out unit for easy bale removal



650mm wide bales fit through all standard doorways



e-Power for added time, energy and cost savings



For more information:

Phone: 08 9248 8681

email: sales@smartwaste.net.au

web: www.smartwaste.net.au

10 Tambrey Way, Malaga, 6090